

Task Team

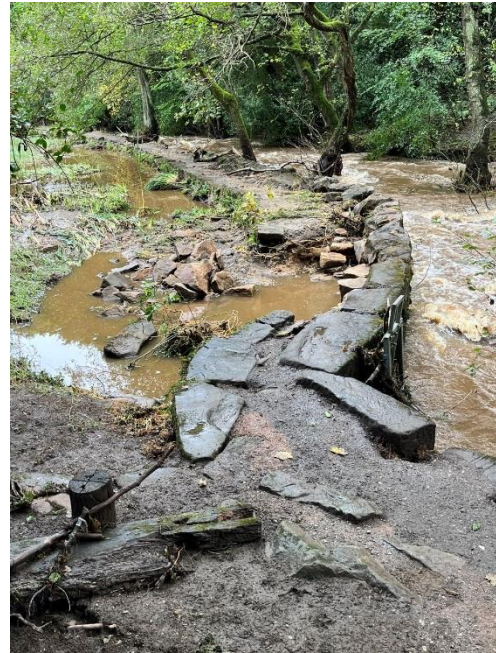
Since the devastation of storm Babet in October 23, the RVCG Task Team have been restoring the Rivelin nature trail between Rivelin Corn Mill at Rails Road and Glen Bridge known locally as the 'S bend' where Rivelin Valley Road crosses the Rivelin. This is now all complete as far as Hind Wheel which itself has been restored by Sheffield City Council. The final section between Hind Wheel and Glen Bridge remains closed. The damage to this section was extreme and repairs are beyond the capability of the RVCG task team and SCC contractors will be required to restore this section.



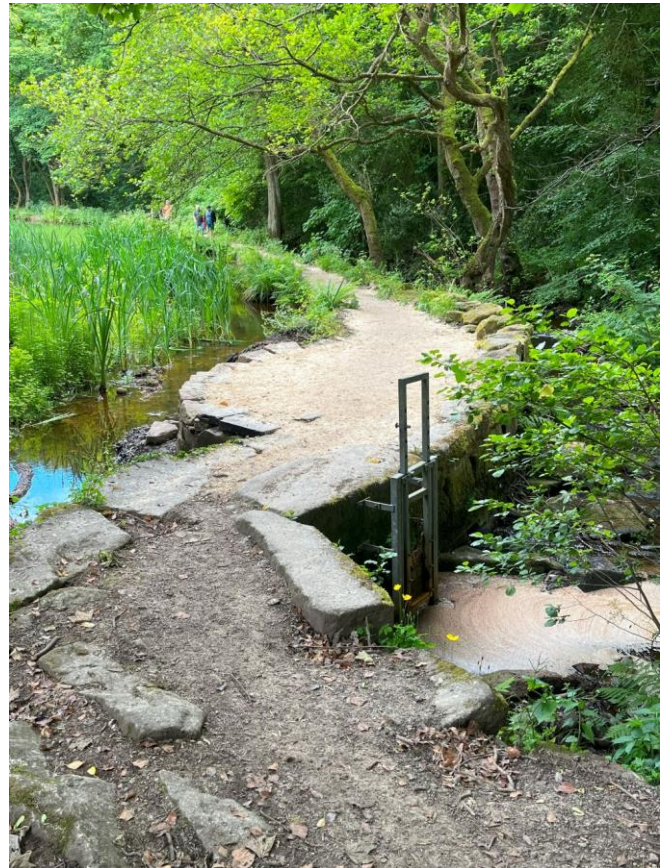
Hind Wheel (East) flood damage Oct 23



Hind Wheel (East) repaired by Sheffield City Council June 24



Hind Wheel (West) flood damage Oct 23



Hind Wheel (West) repaired by Sheffield City Council June 24



Huge stones washed down by the October flood under the bridge at Hind Wheel



Sheffield City Council repairs to the foundation of the bridge at Hind Wheel

April

The April Task Day was deferred for one week until 5th May due to heavy rain. A group of 14 volunteers were given the task of moving 20 tons of grit stone (provided by Sheffield Council) in wheelbarrows down to the nature trail beginning at Swallow Wheel and began the long arduous job of resurfacing the footpath.



A few members of the RVCG Task Team take a well-earned break for the camera



20 tons of gritstone is steadily barrowed away to the Valley bottom.



Footpath repairs at Swallow Wheel weir



Swallow Wheel head goit completely blocked with grit and rocks and showing the weir washed away in the background. There is no water flow here anymore and sadly the dam will slowly dry out.

May

The end of May task day was a continuation of the footpath repairs. As I was unavailable to run the event Ranger Ryan stepped in to run the event for us with about a dozen volunteers. Light rain was forecast but that didn't dampen the spirits of the volunteers.



Sheffield City Council Ranger Ryan Atkin leading the footpath repairs at the end of May task day



Task Team regular, Hilary, with two colleagues in the background proudly displaying their efforts on a restored footpath

June

At the end of June, the weather had improved considerably and the water level in the Rivelin had noticeably dropped. The task was to repair the final section of footpath approaching Hind Wheel. For the past 9 gruelling months, the

RVCG task team had restored over a mile of footpaths, and this would be the final section in the upper Rivelin Valley. However, the distance between the grit supply and the work area was increasing and a barrow run was now taking over 10 mins which was exhausting on a very warm day only slightly tempered by the shade of the trees.



A section of Rivelin Valley nature trail prior to the June task day



Similar section following repairs



After an exhausting day and with the final hole filled, the task team volunteers still manage to raise a smile.

Future task team events will focus efforts on footpath repairs at Holme Head Wheel in the section between the S-bend and Rivelin Park, and we will also be returning to Rivelin Corn Mill where the dipping platform built in 2006 by the RVCG is showing serious signs of deterioration. The inaccessible head goit has not been cleared since storm Babet and now that river levels have dropped, the flow of water into Rivelin Corn Mill is at an all-time low. This is being addressed by Ranger Ryan



*Rivelin Corn Mill needing a bit of TLC
Graham Appleby, Task Team Leader*